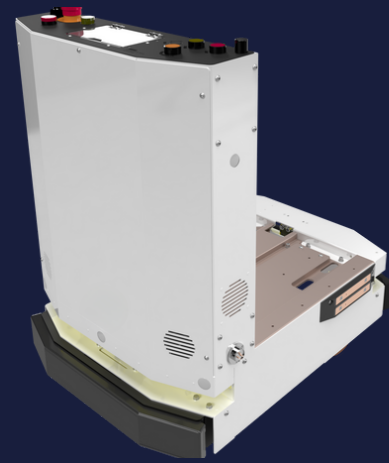


G300

Technical Specifications

The standard model provides a smaller footprint of the AMR with a tall control panel. It is most suitable for trolley towing applications. This model is similar to the 300 series, but stands out with its magnetic strip guidance.



GENERAL INFORMATION

Payload Capacity	600 lbs (300kg)	Stopping Accuracy	MG: ± 10 mm, $\pm 2^\circ$
Max Speed	1 m/s (3.6km/h)	Driving System	Differential Drive
Traversable Gap/Step	5 mm /5 mm	Navigation System	Magnetic Strip

DIMENSIONS

Body & Bumper-to-Bumper:	<u>Body</u> : 702mm <u>Bumper</u> : 782 mm	Turning Radius	0 mm
Width	550 mm	Minimum Width for Pivoting	1100 mm
Height	<u>Panel</u> : 803mm <u>Base</u> : 203mm	Ground Clearance Rated	702 mm

SAFETY

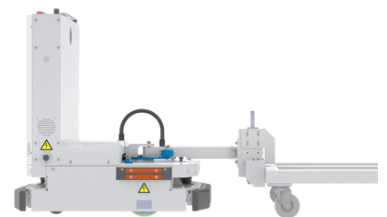
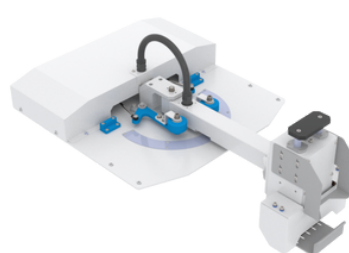
Safety Sensors	1 Obstacle Sensor	Bumpers	2
Emergency Stop	1 Emergency Stop Button	Minimum Safety Clearance	<u>Width</u> : 500mm <u>Height</u> : 2100mm

POWER

Battery Type	25.6V/65AH LiFePO4	Operation Systems	Standalone: NavWiz FMS: Dfleet
Run time	12 Hours		

ADD ONS:

The G300 Towing Module is a payload handler used to link trolley with G300 AMR using “Towing type”. The add on is designed to provide easy and smooth hooking between the AMR and the trolley.



For More Information & Pricing, Contact Us At:

46918 Liberty Drive, Wixom, MI, 48393 | (248) 621-9608
sales@skinternational.us | www.skrobotics.us

