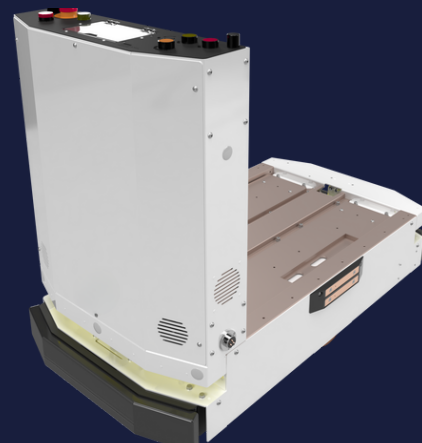


G300 e

Technical Specifications

The extended model provides a larger footprint of the AMR with a tall control panel which allows more space on the AMR for any payload handler (mechanism) integration. This model is similar to the 300 series, but stands out with its magnetic strip guidance.



GENERAL INFORMATION

Payload Capacity	600 lbs (300kg)	Stopping Accuracy	MG: ± 10 mm, $\pm 2^\circ$
Max Speed	1 m/s (3.6km/h)	Driving System	Differential Drive
Traversable Gap/Step	5 mm / 5 mm	Navigation System	Magnetic Strip

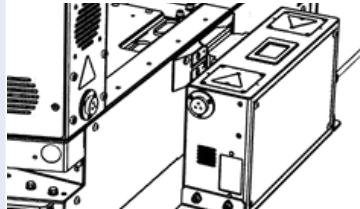
DIMENSIONS

Body & Bumper-to-Bumper:	Body: 982mm Bumper: 1062 mm	Turning Radius	0 mm
Width	550 mm	Minimum Width for Pivoting	1100 mm
Height	Panel: 803mm Base: 203mm	Ground Clearance Rated	702 mm

SAFETY

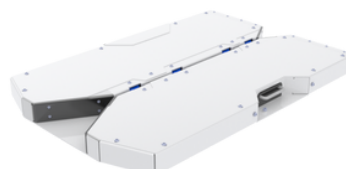
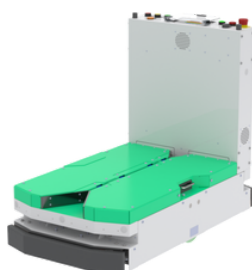
Safety Sensors	1 Obstacle Sensor	Bumpers	2
Emergency Stop	1 Emergency Stop Button	Minimum Safety Clearance	Width: 500mm Height: 2100mm

POWER

Battery Type	25.6V/65AH LiFePO4	Operation Systems	Standalone: NavWiz FMS: Dfleet
Run time	12 Hours		

ADD ONS:

The G300e towing module is a payload handler used to link a trolley with the AMR using a "Hooking type". It is designed to provide easy and smooth hooking between the AMR and the trolley, increasing stability and safety during load transportation.



For More Information & Pricing, Contact Us At:

46918 Liberty Drive, Wixom, MI, 48393 | (248) 621-9608
sales@skinternational.us | www.skrobotics.us

