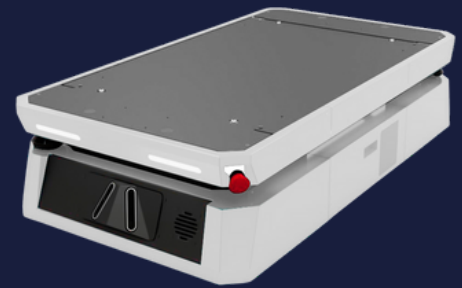


L300-3

Technical Specifications

The L300-3 has an Omni Directional base. This products 360-degree mobility and autonomous operation complement cobots, better optimizing material handling and logistics.



GENERAL INFORMATION

Payload Capacity	600 lbs (300kg)	Stopping Accuracy	Lidar: $\pm 100\text{mm}$, $\pm 2^\circ$
Max Speed	0.76 m/s (2.74km/h)	Driving System	Omni Drive
Traversable Gap/Step	<u>Gap</u> : 10mm <u>Step</u> : Straight Path - 23mm 45 degree Path- 4.5mm	Navigation System	Laser Based

DIMENSIONS

Length	1100 mm	Turning Radius	0 mm
Width	600 mm	Minimum Width for Pivoting	1600 mm
Height	277 mm	Ground Clearance Rated	20 mm

SAFETY

Safety Sensors	2 Bottom Safety LiDAR	Speed Monitor	1
Emergency Stop	2 Emergency Stop Button	Cameras	1 3D Camera

POWER

Battery Type	51.2V/50AH LiFePO4	Operation Systems	Standalone: NavWiz FMS: Dfleet
Run time	8 Hours		

ADD ONS:

The L300-3 Wireless Charging Station features an impressive output power of 1500 W and output voltage of 48 V and is designed for floor-mounted installation.



For More Information & Pricing, Contact Us At:

46918 Liberty Drive, Wixom, MI, 48393 | (248) 621-9608
sales@skininternational.us | www.skrobotics.us

