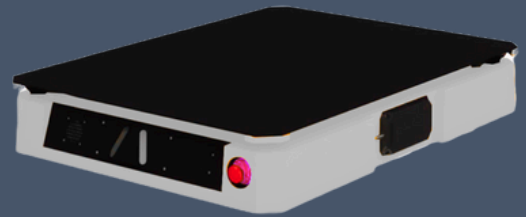


L300e-3

Technical Specifications

The extended L300e-3 has an Omni Directional base. This AMR's 360-degree mobility and autonomous operation complement cobots (collaborative robots), better optimizing material handling and logistics.



GENERAL INFORMATION

Payload Capacity	600 lbs (300kg)	Stopping Accuracy	Lidar: $\pm 50\text{mm}$, $\pm 2^\circ$
Max Speed	1 m/s (3.6km/h)	Driving System	Omni Drive
Traversable Gap/Step	10 mm / 5 mm	Navigation System	Laser Based

DIMENSIONS

Length	1138 mm	Turning Radius	0 mm
Width	830 mm	Minimum Width for Pivoting	1650 mm
Height	204 mm	Ground Clearance Rated	20 mm

SAFETY

Safety Sensors	2 Bottom Safety LiDAR	Speed Monitor	1
Emergency Stop	2 Emergency Stop Button	Cameras	1 3D Camera

POWER

Battery Type	51.2V/50AH LiFePO4	Operation Systems	Standalone: NavWiz FMS: Dfleet
Run time	8 Hours		

ADD ONS:

The L300-3 Wireless Charging Station features an impressive output power of 1500 W and output voltage of 48 V and is designed for floor-mounted installation. Its compact design allow for seamless, contactless charging with minimal intervention.



For More Information & Pricing, Contact Us At:

46918 Liberty Drive, Wixom, MI, 48393 | (248) 621-9608
sales@skininternational.us | www.skrobotics.us

