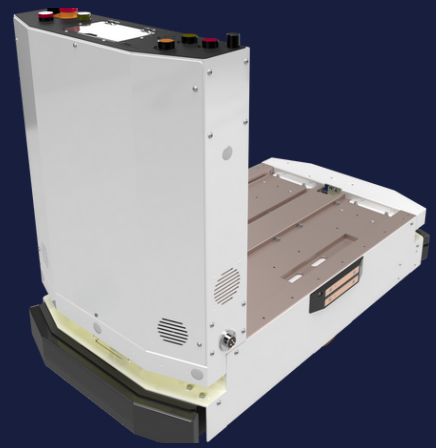


# L300e

## Technical Specifications

The extended model provides a larger footprint of the AMR with a tall control panel which allows more space on the AMR for any payload handler (mechanism) integration.



### GENERAL INFORMATION

Payload Capacity	600 lbs (300kg)	Stopping Accuracy	Lidar: $\pm 100\text{mm}$ , $\pm 2^\circ$
Max Speed	1 m/s (3.6km/h)	Driving System	Differential Drive
Traversable Gap/Step	5 mm / 5 mm	Navigation System	Laser Based

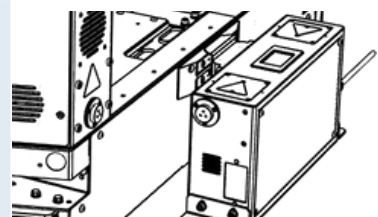
### DIMENSIONS

Body & Bumper-to-Bumper:	982 mm / 1062 mm	Turning Radius	0 mm
Width	550 mm	Minimum Width for Pivoting	1100 mm
Height	Panel: 803mm Base: 203mm	Ground Clearance Rated	702 mm

### SAFETY

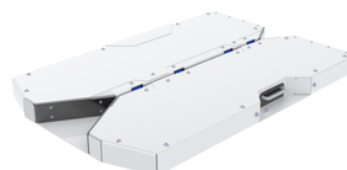
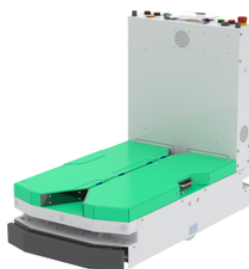
Safety Sensors	2 Bottom Safety LiDAR	Bumpers	2
Emergency Stop	1 Emergency Stop Button	Minimum Safety Clearance	Width: 500mm Height: 2100mm

### POWER

Battery Type	25.6V/65AH LiFePO4	Operation Systems	Standalone: NavWiz FMS: Dfleet
Run time	12 Hours		

### ADD ONS:

The L300e towing module is a payload handler used to link a trolley with the AMR using a "Hooking type". It is designed to provide easy and smooth hooking between the AMR and the trolley, increasing stability and safety during load transportation.



For More Information & Pricing, Contact Us At:

46918 Liberty Drive, Wixom, MI, 48393 | (248) 621-9608  
sales@skinternational.us | www.skrobotics.us

